

Bryniau, Dyserth, Denbighshire LL18 6BY

£625,000

🛏️ 4 🚿 2 🚗 2



This stunning country residence enjoys panoramic views over countryside towards the Clwydian Range and offers tastefully decorated accommodation throughout. It has a wealth of charm and character with Inglenook fireplaces, exposed stone walls and beams to part with all the modern refinements you would expect from a family home. It affords two good size reception rooms, entrance hall, fitted kitchen with dining area, conservatory, master bedroom with en-suite and a further three double bedrooms with a study area and well appointed family bathroom. It stands in enclosed gardens with electric remote controlled gates to a parking area, electric vehicle charging point and garage.

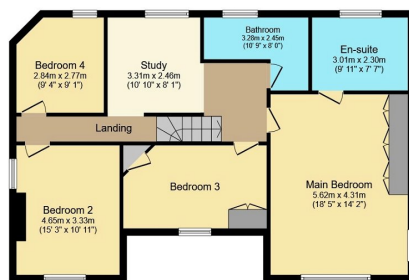
Key Features

- WELL PRESENTED COUNTRY RESIDENCE
- PANORAMIC VIEWS
- TWO RECEPTION ROOMS
- KITCHEN/DINER, UTILITY & CLOAKS
- SPACIOUS CONSERVATORY
- FOUR DOUBLE BEDROOMS
- STUDY AREA, ENSUITE TO MASTER
- ENCLOSED GARDENS & GARAGE
- FREEHOLD - NO CHAIN
- EPC - F COUNCIL TAX BAND - G



Ground Floor

Floor area 107.3 sq.m. (1,155 sq.ft.) approx



First Floor

Floor area 91.5 sq.m. (985 sq.ft.) approx

Total floor area 198.9 sq.m. (2,140 sq.ft.) approx

This plan is for illustration purposes only and may not be representative of the property. Plan not to scale.

Powered by audioagent.com